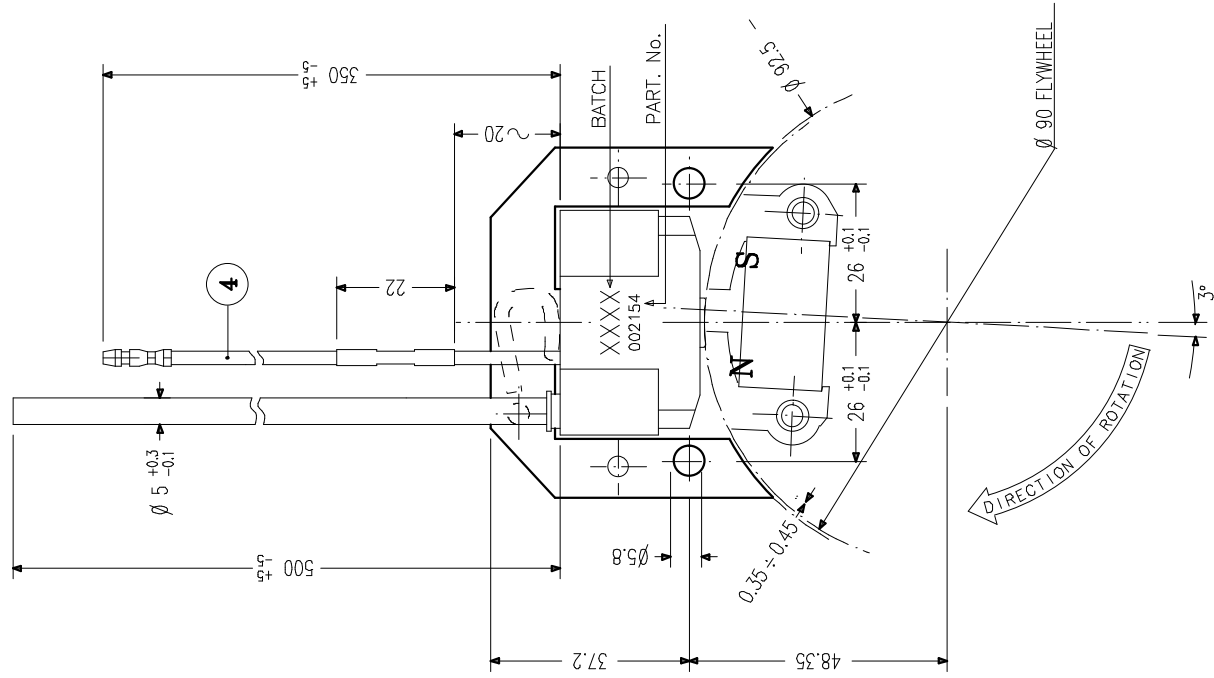


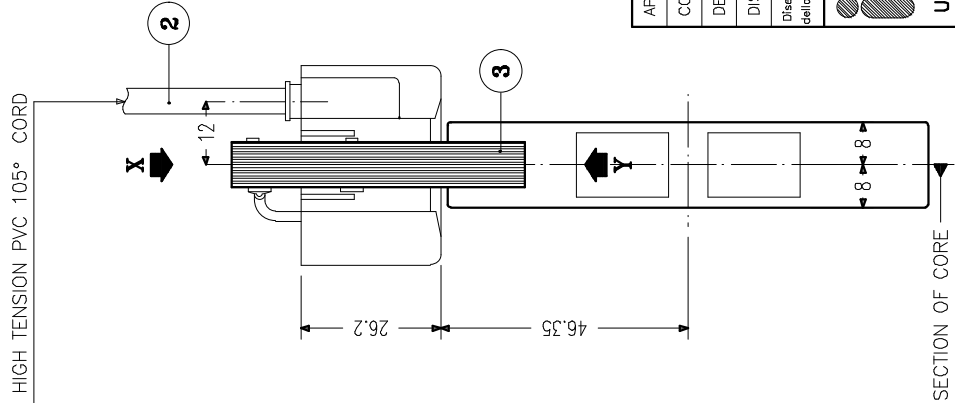
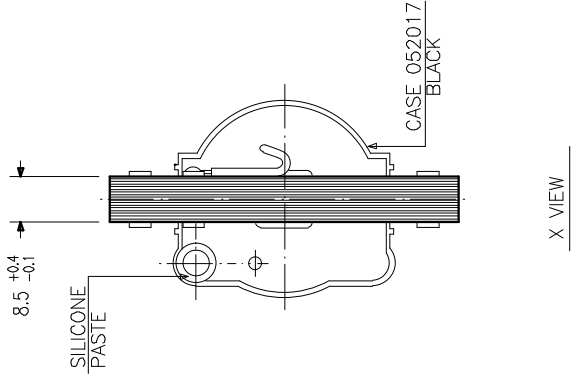
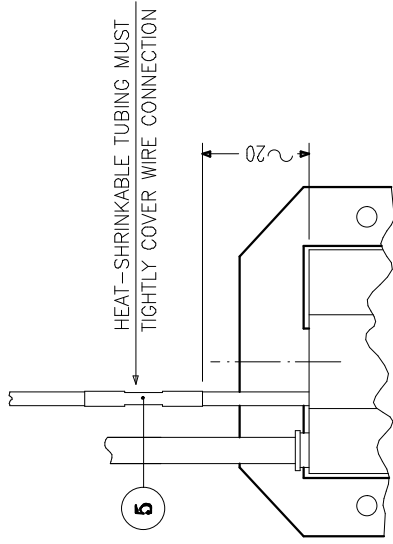
5	057158	TUBING	1		
4	057346	CABLE	1		
3	358020	CORE	1		
2	057712	HIGH TENSION CORD	PVC 105° C		
1	002154	T.C.I. UNIT ASSY	//		
NO.	IDM PART NO.	CUSTOMER PART NO.	PART NAME	MATERIAL	QTY

THIS DWG SHOWS THE RELATIVE LOCATION  
AT THE INSTANT OF FIRING (4000rpm)



### 1. RATING

TYPE: T.C.I. INDUCTIVE - NEGATIVE SPARK  
FLYWHEEL DIRECTION OF ROTATION: SEE DWG.  
FLYWHEEL INDUCTION:  $410\text{mT} \pm 10\text{mT}$   
OPERATING SPEED:  $500\text{rpm} \sim 10.000\text{rpm}$   
OPERATING TEMPERATURE:  $-20^\circ\text{C} + 70^\circ\text{C}$ . TEMPERATURE MUST NOT EXCEED  $70^\circ\text{C}$  ON CORE, NEAR HOLES FOR FIXING IGNITION TO CRANKCASE, SIDE CRANKCASE. ON SAME LOCATIONS, AFTER ENGINE STOP, TEMP. MUST NOT EXCEED  $110^\circ\text{C}$ .  
SEC. OUTPUT 50pF LOADED @ 500 rpm: MIN. 8.0 KV  
SEC. OUTPUT 50pF LOADED @ 10.000 rpm: MIN. 14.0 KV



RESISTANCE VALUE OF COILS (AT 20° C)	
MEASURING PLACE	RESISTANCE VALUE (OHM)
FASTON-CORE	$1.1 \pm 10\%$
H.T. CORD-CORE	$8.2K \pm 10\%$

APPROV.	7	
CONTR.	6	
DESIGN.	5	
DISEGNAT.	4	
	3	
	2	
	1	05.09.01
		Cavo stop era lungo 300mm.
DATA	21.05.01	
SCALA	1:1	
F. A3	MATERIALE	
	IND.	DATA
	MODIFICA	
	DISEGN. CONTR.	
	FRATTAMENTO	
	SOST. IL	
	DIS. SPER.	
	CODICE	002154
DENOMINAZIONE		
I.C.I. UNIT ASSY		
DIS. N°		
002154		

